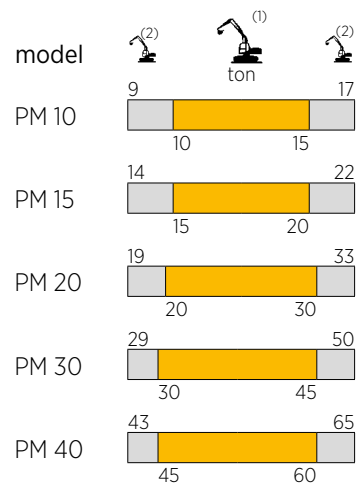
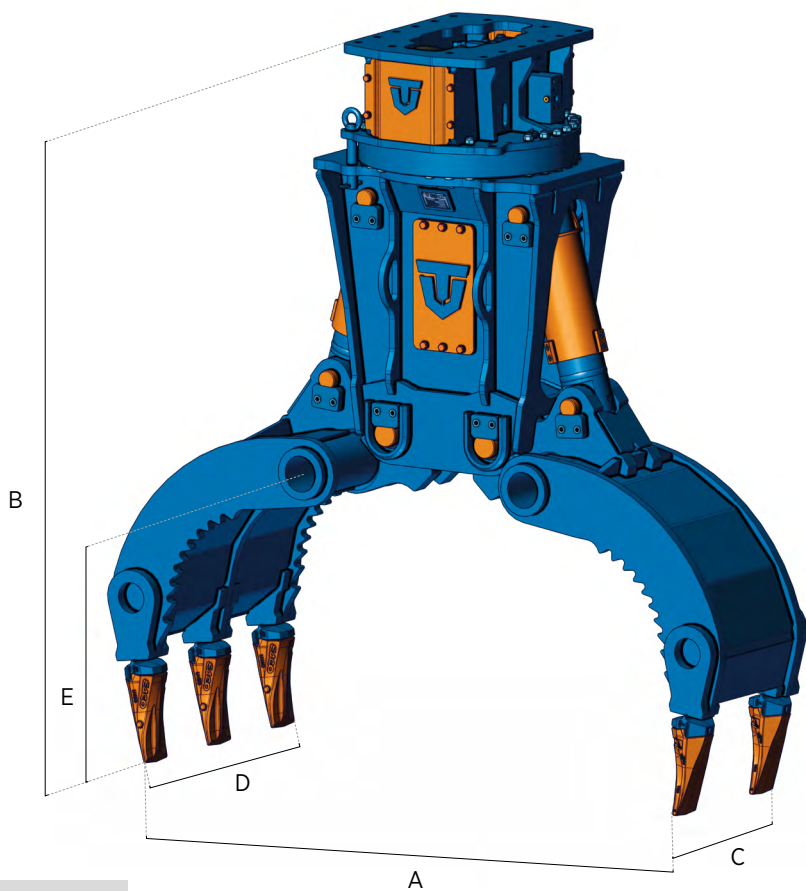










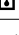
SERIA PM



 (1) Optymalna kombinacja koparka - osprzęt
Optimum excavator - equipment combination

 (2) Możliwa kombinacja koparka - osprzęt
Possible excavator - equipment combination



		PM 10	PM 15	PM 20	PM 30	PM 40
	kg.	700	1360	2230	3710	4900
A	mm.	920	1570	1750	2180	2570
B	mm.	1870	2020	2200	2800	3070
C	mm.	360	400	530	630	790
D	mm.	550	710	810	980	1320
E	mm.	800	800	850	1100	1420
Cap. SAE	m ³	0,4	0,6	0,9	1	1
 max	bar	320	350	350	350	350
	l/min.	100 / 120	100 / 200	180 / 250	200 / 300	250 / 350
 max	bar	140	140	140	140	140
	l/min.	15 / 30*	20 / 40*	20 / 40*	25 / 50*	25 / 50*

*Podwójny silnik / *Double motor



HARDOX
WEAR PLATE

